



Report of the Chief Planning Officer

PLANS PANEL CITY CENTRE

Date: 4TH FEBRUARY 2010

Subject: Natural Resources and Waste Development Plan Document Policy Position Report (Preferred Options)

APPLICANT

N/A

DATE VALID

N/A

TARGET DATE

N/A

Electoral Wards Affected:

All

x

Ward Members consulted
(referred to in report)

Specific Implications For:

Equality and Diversity

Community Cohesion

Narrowing the Gap

RECOMMENDATION: To receive a presentation on the content of the Natural Resources and Waste DPD Policy Position Report and to make comments as part of the consultation process.

1.0 EXECUTIVE SUMMARY

- 1.1 Development Plan Panel Members agreed to release the Natural Resources and Waste Development Plan Document (DPD) Policy Position Report on 13th October 2009, as the basis for informal public consultation. The consultation runs for 6 weeks commencing on 18th January 2010.
- 1.2 The Natural Resources and Waste Development Plan Document (NRWDPD) is part of the new Local Development Framework. The Policy Position Report sets out the Council's preferred options for planning policies relating to minerals, renewable energy, water resources (including flood risk), air quality and waste. It aims to help us use our natural resources in a more efficient way.

2.0 PURPOSE:

- 2.1 This report and accompanying presentation are intended to brief Members of the Plans Panel on the content of the Natural Resources and Waste Development Plan Document (DPD) Policy Position Report and provide opportunity for Members to make immediate comments. In addition, the briefing should equip Members to be able to make further considered written comments during the consultation period if they so wish.

3.0 BACKGROUND:

- 3.1 The Natural Resources and Waste Development Plan Document is currently being prepared and is a significant part of the Leeds Local Development Framework (LDF). This DPD aims to provide an integrated approach to managing natural resources within Leeds, to ensure that they are used in the most efficient way and to give an indication of how Leeds will manage its waste now and in the future until 2026. This DPD (and supporting material) has been subjected to “Issues and Alternative Options” public consultation (May - June 2008). Following consideration of the comments received and further technical work, Jacobs (Strategic Design Alliance) and City Council officers (via a Technical Steering Group), have developed this ‘Policy Position’ report.
- 3.2 Within the context of the City Council’s Statement of Community Involvement, a programme of consultation has been developed. This includes the creation of consultation and display material, the hosting of exhibitions and “drop-in-sessions”, outreach contact with minority groups and the use of the City Council’s web site. We are also notifying a wide range of stakeholders, neighbouring local authorities and Parish Councils.

4.0 MAIN ISSUES:

- 4.1 This DPD will set out where land is needed to enable us to manage resources, like minerals, energy, water and waste, over the next 15 years and identifies specific actions which will help us use our natural resources in a more efficient way. Planning policies are used to control and encourage development patterns to:
- Ensure responsible use of natural resources such as minerals, water and energy;
 - Predict future pressures on resources, such as climate change and increased housing growth, and plan for these by reducing flood risk, improving air quality and increasing renewable energy provision;
 - Ensure that sufficient sites are provided to enable us to manage our waste;
 - Increase waste recycling and processing so that less waste goes to landfill;
 - Encourage more use of those resources that don’t run out, such as solar and wind energy.

LAND USE

- 4.2 In order to improve air quality and reduce carbon emissions we need to make the most of opportunities for alternative transport from road. To support this, where there are railway sidings and canal wharves which are, or could be, used for mineral and waste activities, it is proposed to safeguard them for that purpose. This helps to reduce the extent to which bulky materials have to be transported by road.

These sites are shown as B2 sites on the attached Maps A1 and A2

MINERALS

- 4.3 To ensure that we have sufficient mineral reserves we propose to safeguard existing mineral sites to make the most of current workings and reduce pressure for new workings. Safeguarded mineral sites are shown as B1 sites on the attached Maps A1 and A2.
- 4.4 To ensure that we have sufficient mineral resources to last for the next 15 years we propose to identify Mineral Safeguarding Areas where the land will be protected from development that would prevent future quarrying and where mineral operators will be expected to look for resources should the need arise. Mineral Safeguarding Areas are shown as B4 sites on the attached Maps A1 and A2.

WATER RESOURCES

- 4.5 We intend to require all developments to include measures to improve their water efficiency and deal with sources of wastewater. To help manage flood risk we propose planning policy that:
- Allows space for flooding by preventing most types of development in areas defined as 'functional flood plain'
 - Avoids inappropriate development in high flood risk areas wherever possible
 - Controls development in locations that could be at risk of rapid water inundation should flood defences fail
 - Requires an assessment of flood risk for any development (the assessment will be in proportion to the development size and flood risk)
 - Reduces surface water runoff in new developments.

AIR QUALITY

- 4.6 We intend to include a policy to require all new developments to include measures to improve air quality (commensurate with the scale of the development). We are investigating whether it would be beneficial to create Low Emission Zones in some areas of the District. These would be areas where the more polluting vehicles would not be permitted.

ENERGY

- 4.7 The Regional Spatial Strategy (RSS) sets targets for installed, grid-connected renewable energy provision in Leeds. We have set out how we think the RSS targets might be met from different sources of renewable energy in the District. We have included a map of wind speeds which indicates that there are areas in the District where there is potential for wind energy generation to be viable and alongside this we have included a criteria based policy which gives an indication of the factors which will be considered when wind energy applications are submitted. We have also made a commitment to the setting up of an Energy Service Company in Leeds which will act as a delivery vehicle for low carbon projects.

WASTE

- 4.8 We want Leeds to be self sufficient so that the District has sufficient waste management facilities and sites to manage all the waste it produces. This means

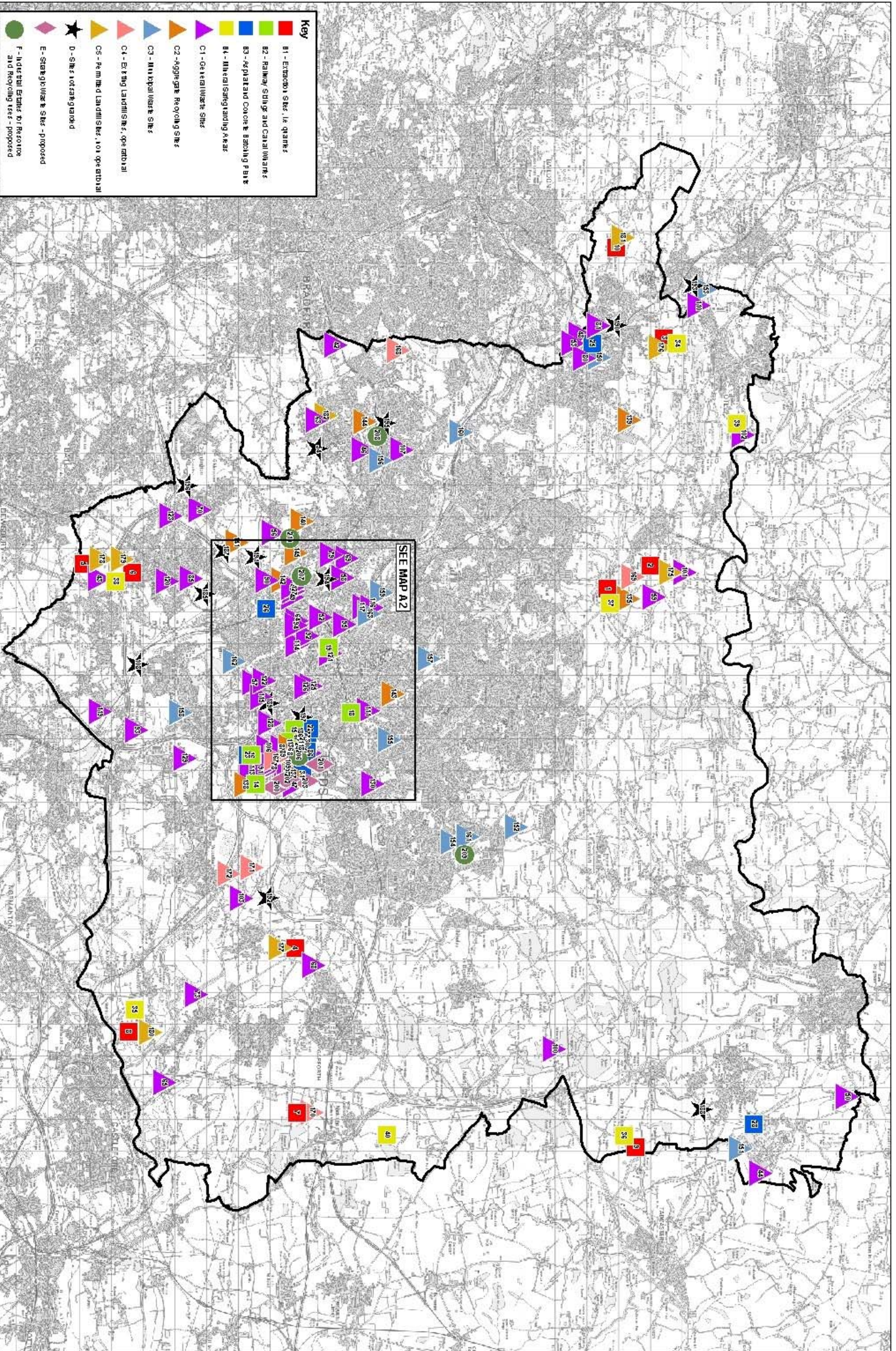
increasing the overall waste management capacity to meet this need (i.e. waste collection, transfer, sorting and treatment facilities). We intend to do this by safeguarding existing waste sites across the District (shown as sites C1 to C5 on Maps A1 and A2), providing a limited number of strategic sites for larger facilities in the industrial areas of the Aire Valley (shown as E sites on Maps A1 and A2) and identifying where there are existing industrial estates that have potential for more waste related activities to take place (shown as F sites on Maps A1 and A2).

5.0 NEXT STEPS:

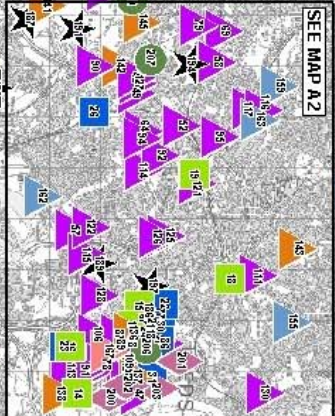
- 5.1 Following informal consultation on the Policy Position document, a “Publication” draft of the DPD, will be prepared and this will be subjected to further consultation prior to submission to the Planning Inspectorate for Examination and then Adoption.

Background Papers:

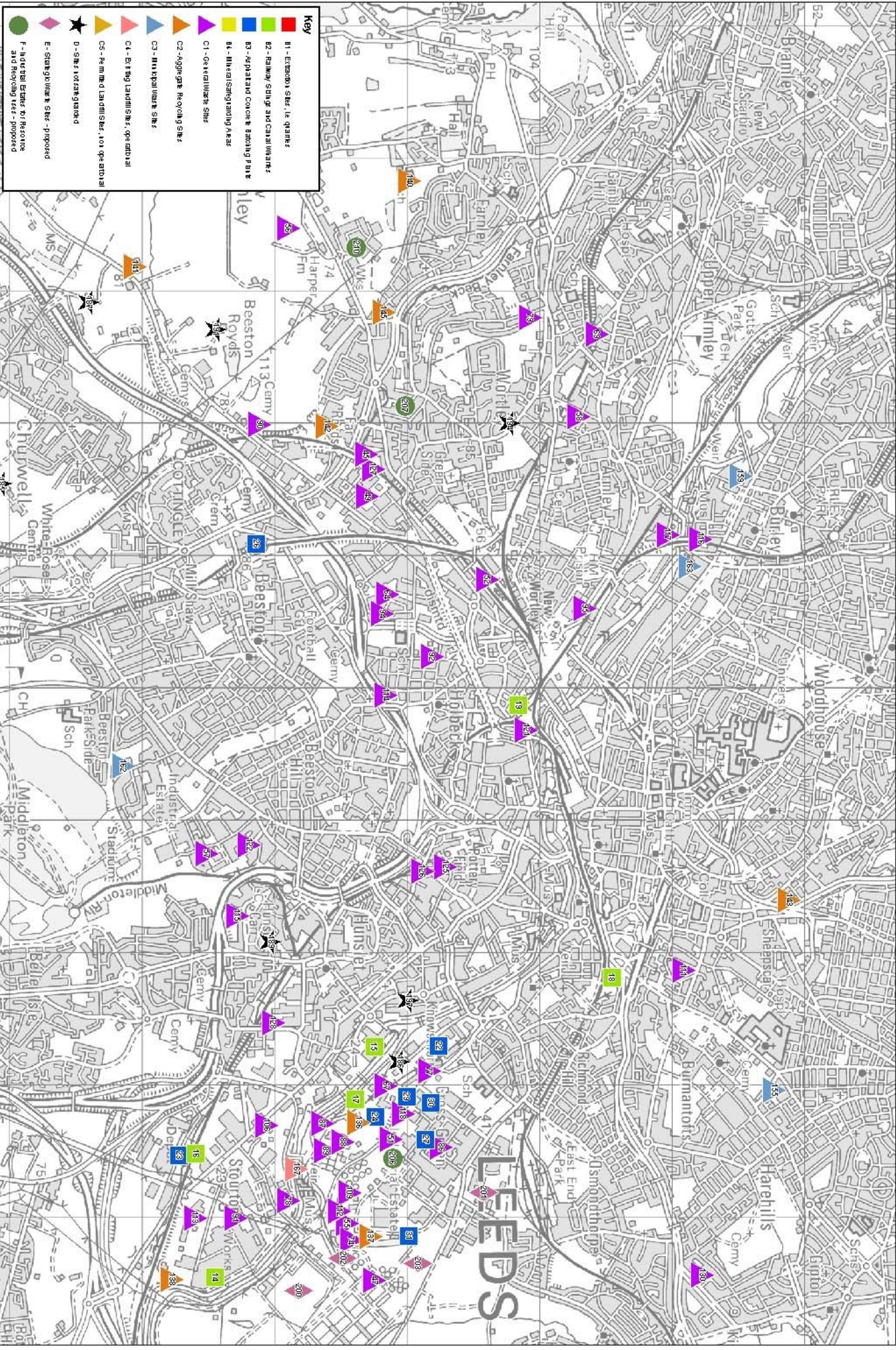
Natural Resources and Waste DPD – Policy Position Report (and associated documents)



Key	
■	B1 - Extortion Sites, i.e. quays
■	B2 - Railway Sludge and Canal Works
■	B3 - Airport and Core & Beaching Plant
■	B4 - Mineral Sandgrinding Areas
▲	C1 - General Waste Sites
▲	C2 - Aggregate Recycling Sites
▲	C3 - Multi-hazard Waste Sites
▲	C4 - Existing Landfills Sites, operational
▲	C5 - Permitted Landfills Sites, 101 operational
★	D - Sites not categorised
◆	E - Storage/works Sites - proposed
●	F - Industrial Estates for Resettlement and Recycling Uses - Proposed



LEEDS



Key

- B1 - Extension Sites, i.e. grants
- B2 - Railway Siding and Canal Wharves
- B3 - Asphalting Concrete and Tarmac Paving
- B4 - Mineral Storage and Leach
- C1 - Development Sites
- C2 - Aggregate Recycling Sites
- C3 - Mineral Aggregate Sites
- C4 - Existing Landfill Sites, operational
- C5 - Remnant of Landfill Sites, not operational
- D - Sites for re-landfill
- E - Sites for re-landfill - proposed
- F - Interim Sites for Resource and Recycling uses - proposed

PRODUCED BY LEEDS CITY COUNCIL
 This map is a technical drawing and is not intended to be used for any other purpose.
 Copyright © Leeds City Council 2008. All rights reserved. Leeds City Council is not responsible for any loss or damage arising from the use of this map.

